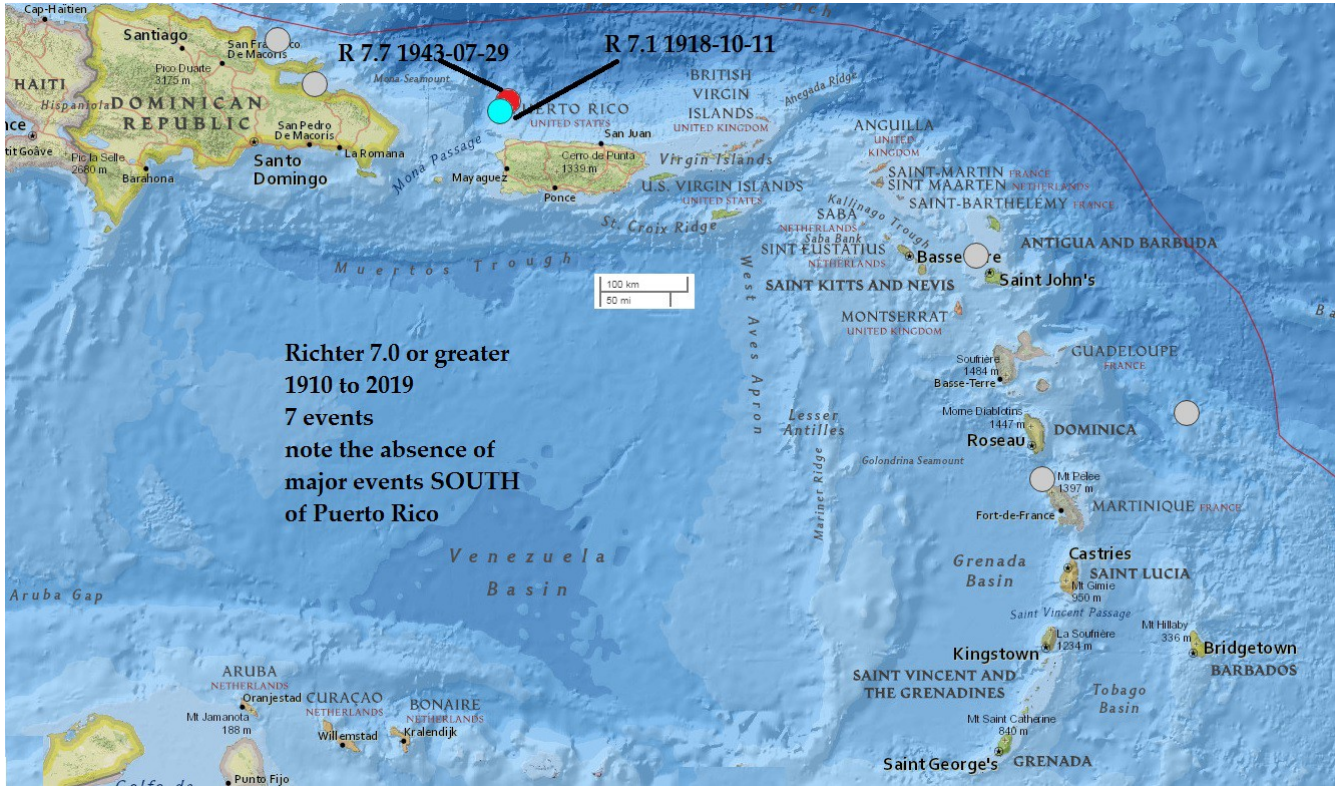
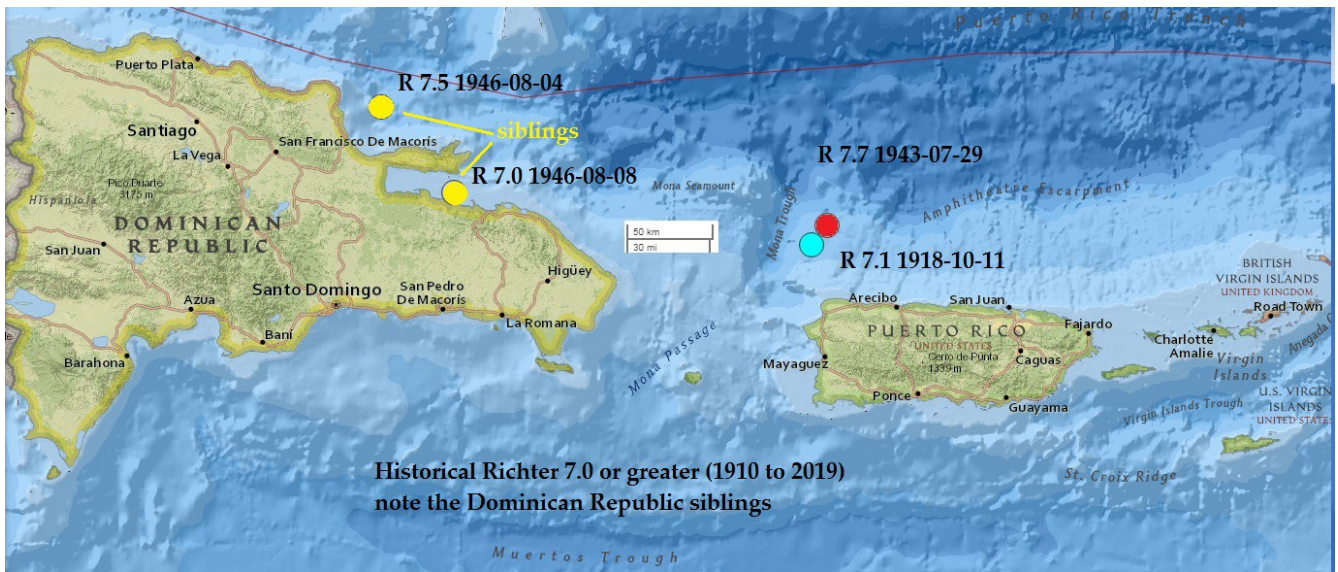


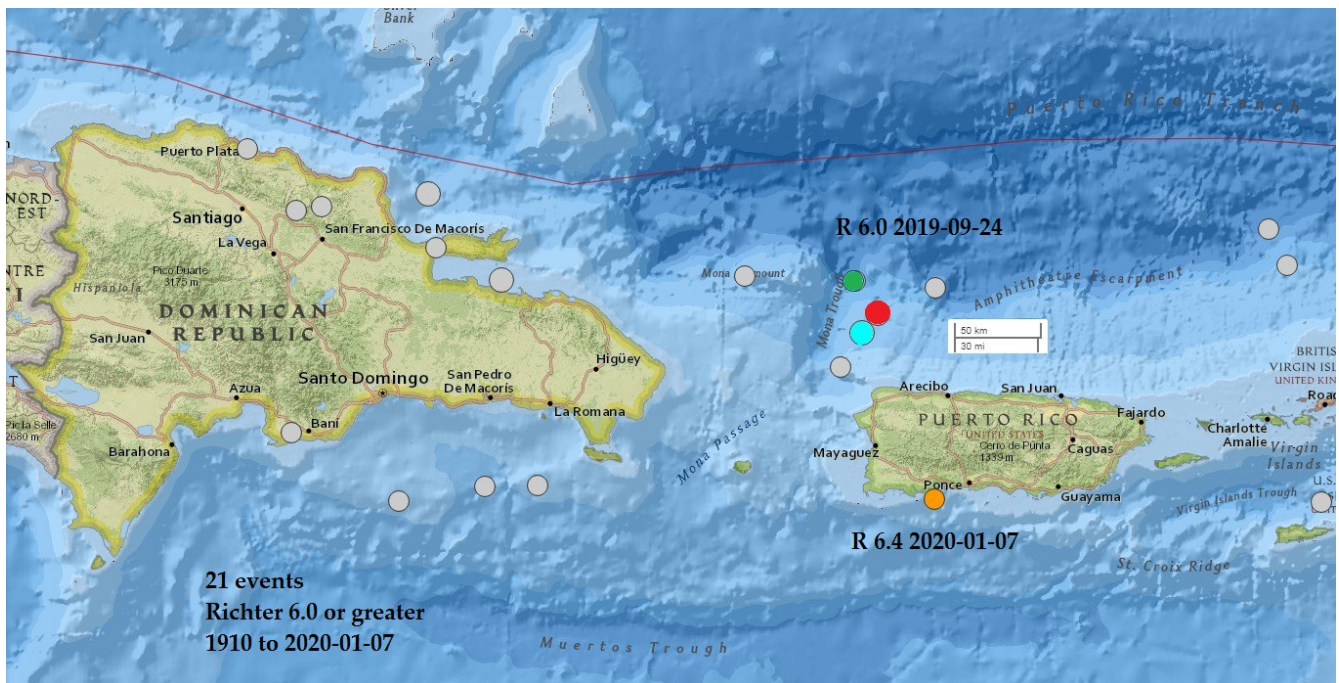
Puerto Rico

The name means "rich port" - alas, only a linguistic connection to world-famous products of the Sandeman winery.

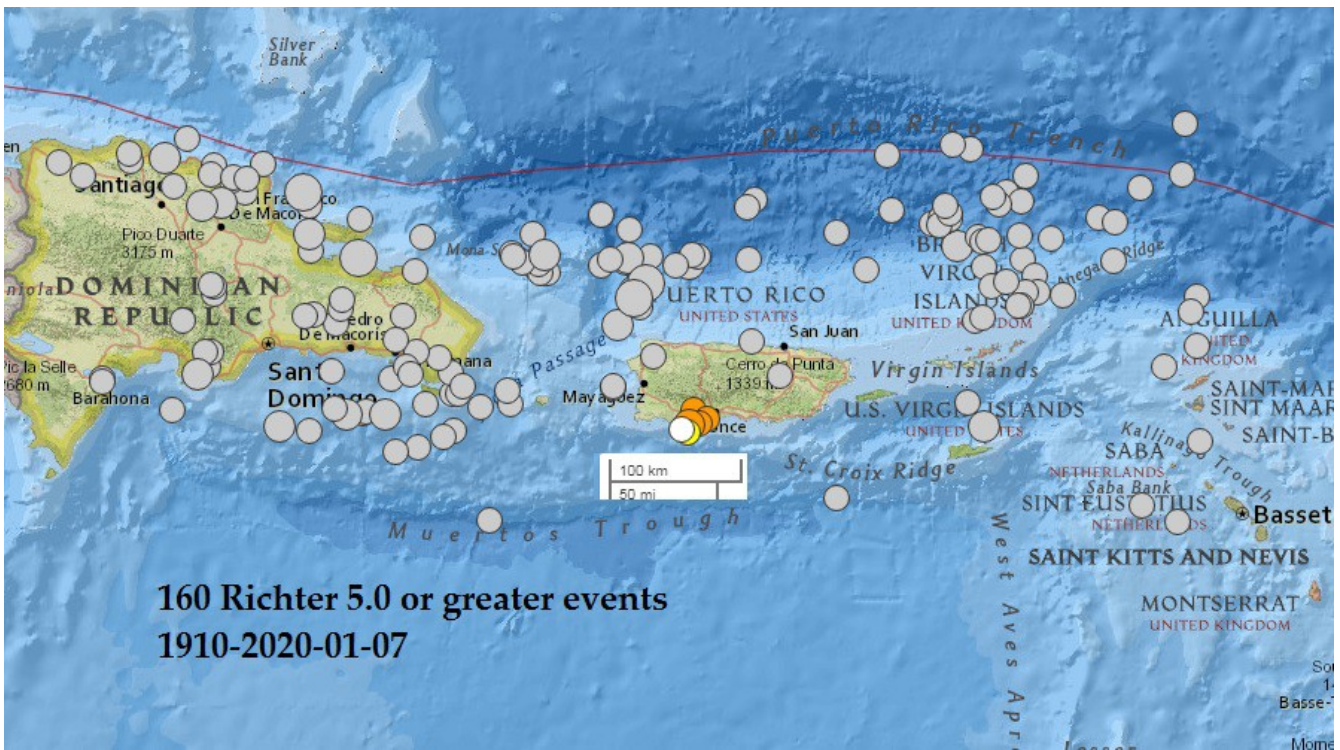




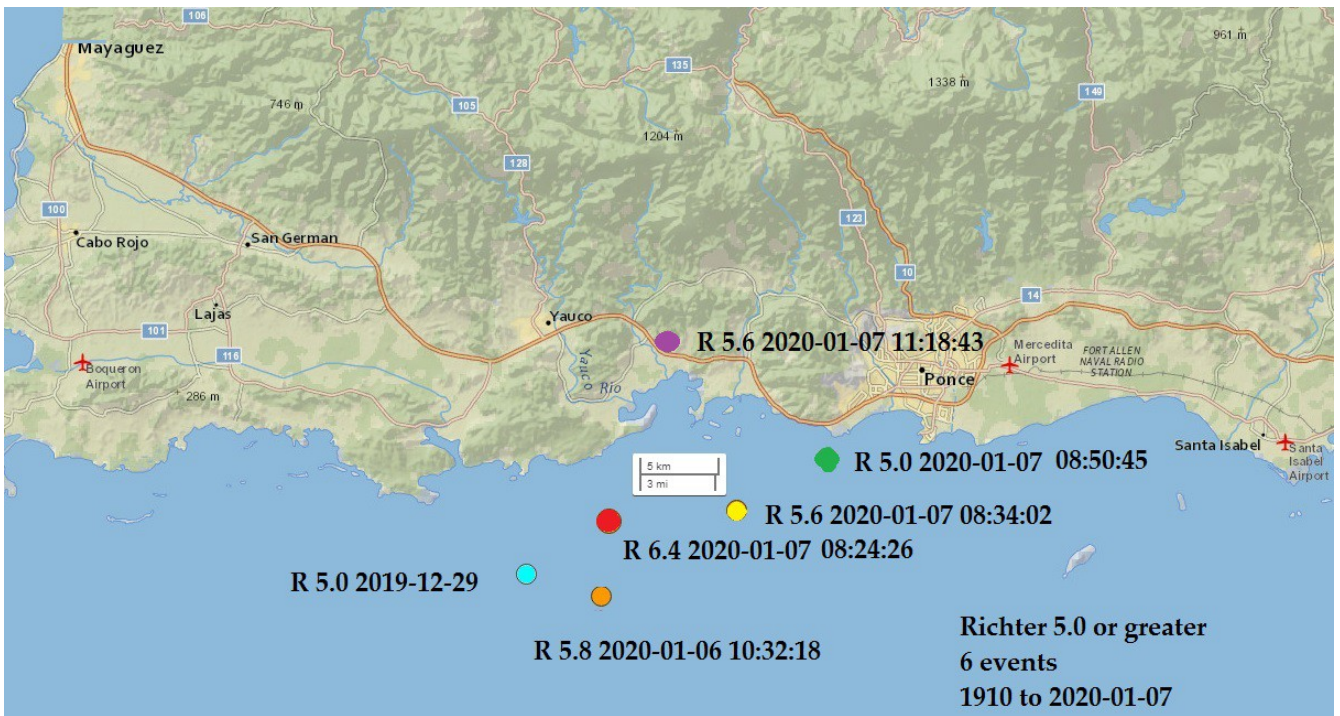
A map with comments on the two seismic siblings to the northwest – north of the Dominican Republic.



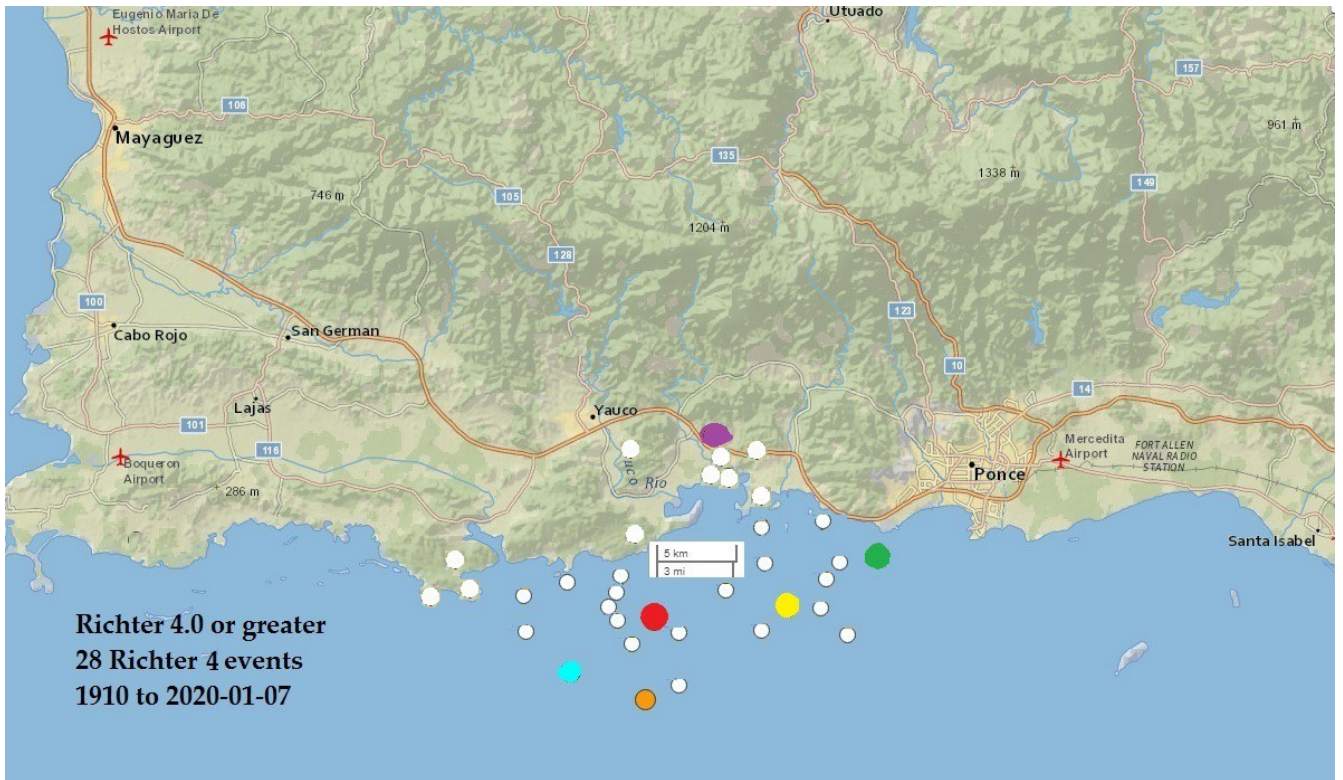
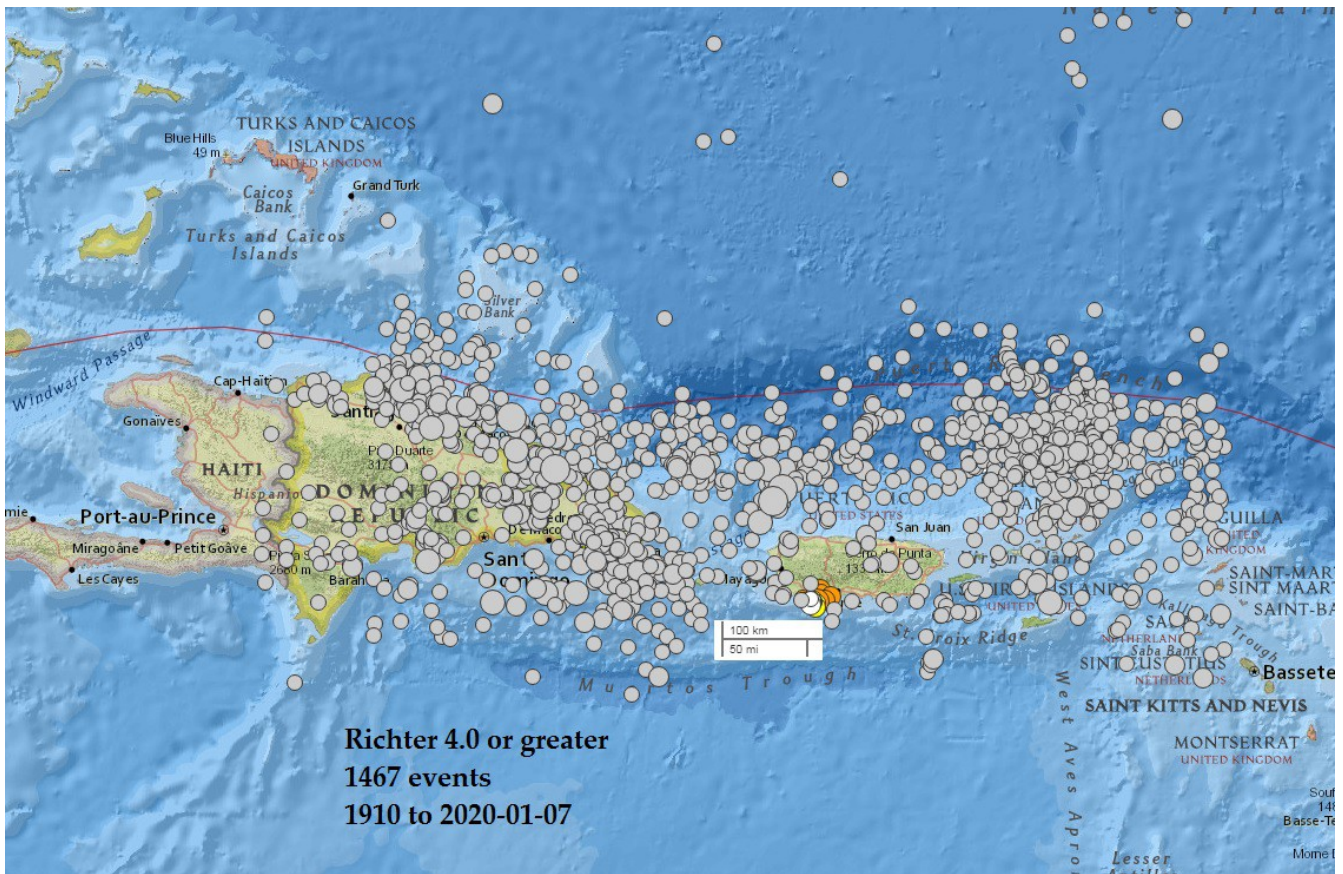
A map of historical 17 Richter 6 earthquakes with the cyan and red markers indicating the Richter 7s. Note that there is just the one very recent earthquake (orange marker) south of Puerto Rico. The green marker (north of the island) indicates a Richter 6.0 last September.

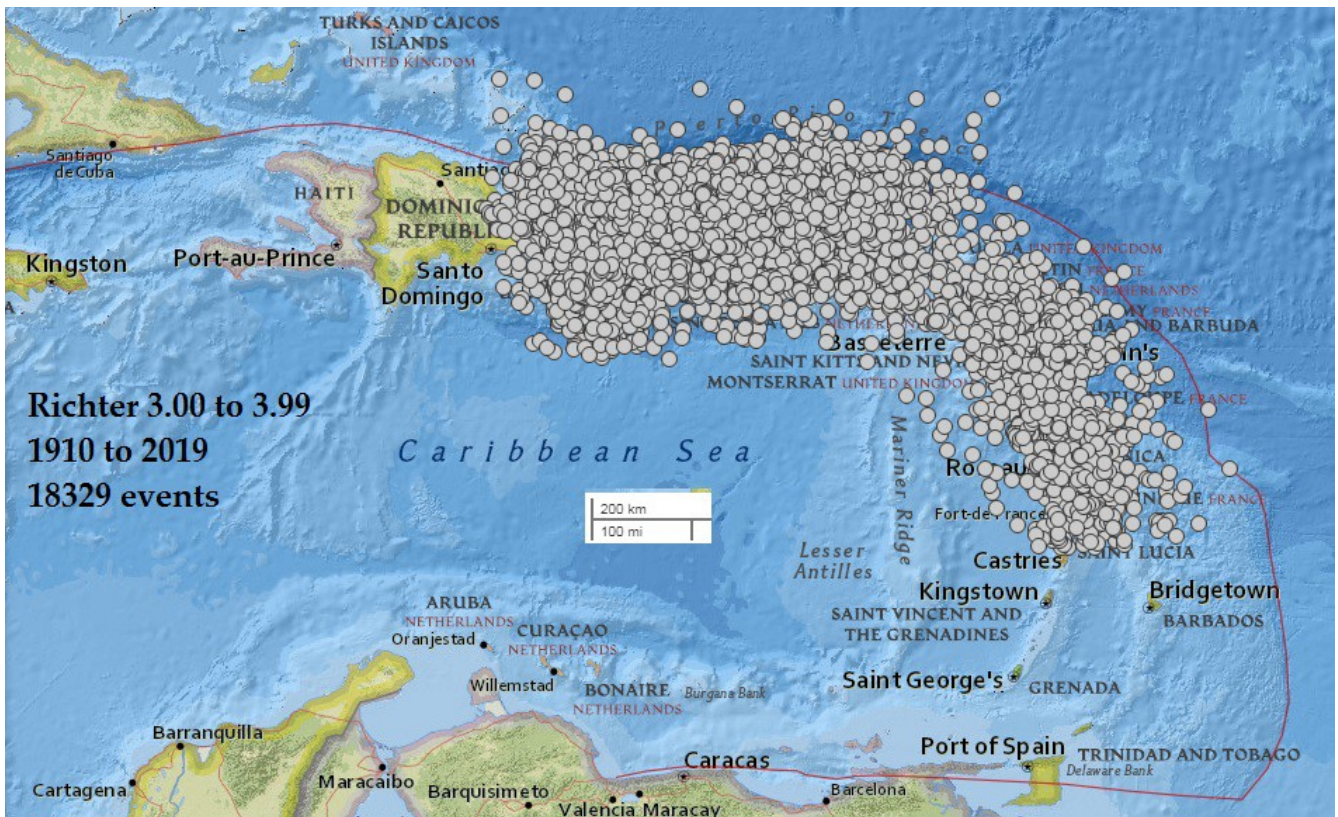


139 historical Richter 5s

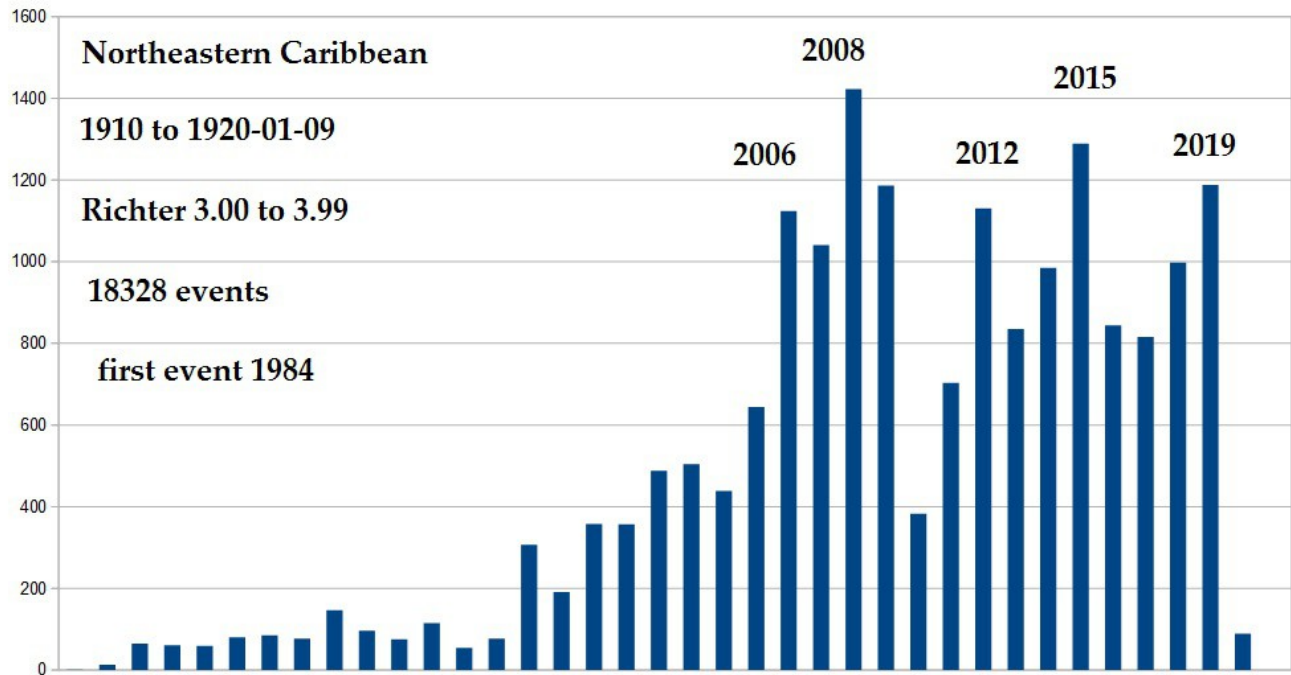


Focusing on the southern coast - all the local Richter 5s are recent

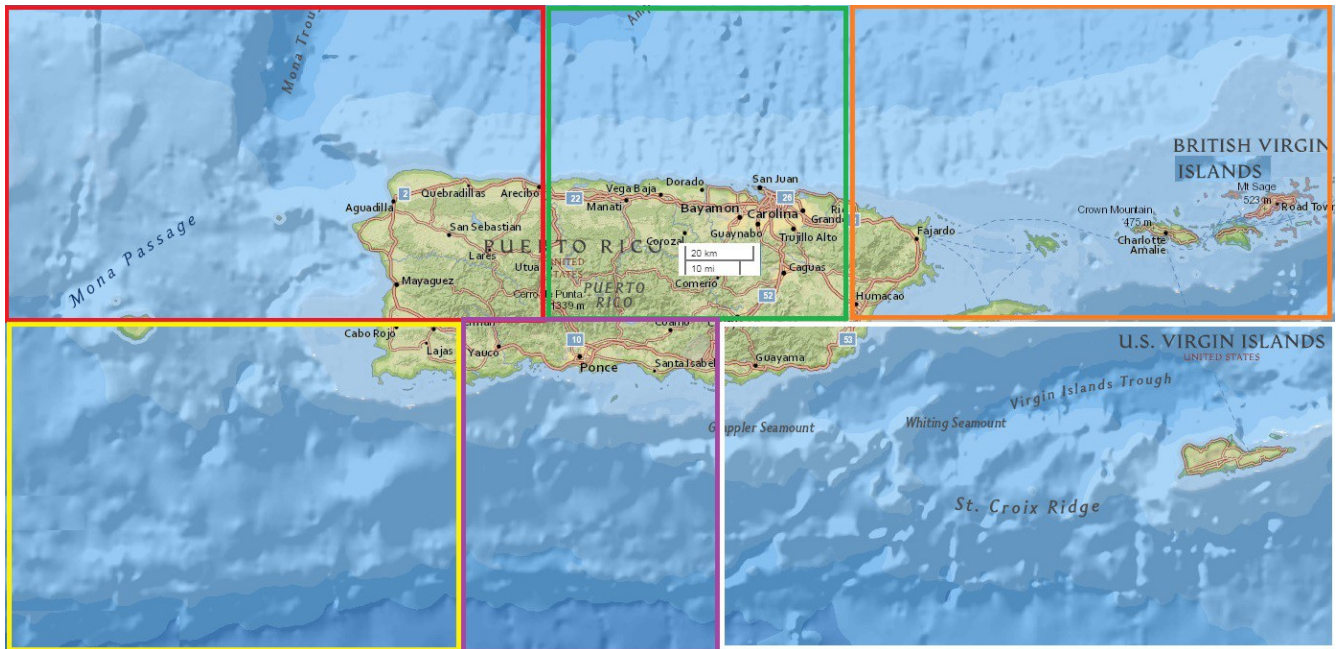




Not very useful except for proving there have been a great many Richter 3s. However, it is noticeable that the Richter 3 events tend to follow the red fault line (when it is visible) as it curves to the southeast.



This monolithic viewpoint masks the observation that cluster analysis divides the over 18,000 Richter 3 events into six clusters. Note: depth is ignored and Euclidean distance used. The clustering ignores the surface (water versus land) as well as topologies (mountains, trenches, rivers, cities ...) The boundaries of the geographical zones have been drawn as rectangles.



Color	West longitude	East longitude	North latitude	South latitude
red	68.5	66.75	19.5	18.25
green	66.74	65.9	19.5	18.25
orange	65.89	64.25	19.5	18.25
yellow	68.5	67	18.24	17.2
purple	66.99	66.2	18.24	17.2
white	66.19	64.25	18.24	17.2

For each zone there follows a map of one hundred and ten years of seismic activity (1910 to present); ten years of seismic activity (2010-01-01 to present); one year of seismic activity (2019-01-01 to present) and one month of seismic activity (2019-12-01 to present).

Predictions for January

Color	Richter 3s	Richter 4s	Richter 5s	> Richter 5.99
red	120	3	1	0
green	9	0	0	0
orange	32	0	0	0
yellow	8	0	0	0
purple	180	75	10	1
white	2	0	0	0